

[REDACTED]

[REDACTED]

[REDACTED]

Medicine



Garlic

Medicine



Foxglove

Medicine



Poppy

Medicine



Lavender

Medicine



Ginger

Fuel



Sugar

Fuel



Coal

Fuel



Corn

Fuel



Vegetable Oil

Fuel



Peat

Construction



Banana Leaf

Construction



Coconut

Construction



Bamboo

Construction

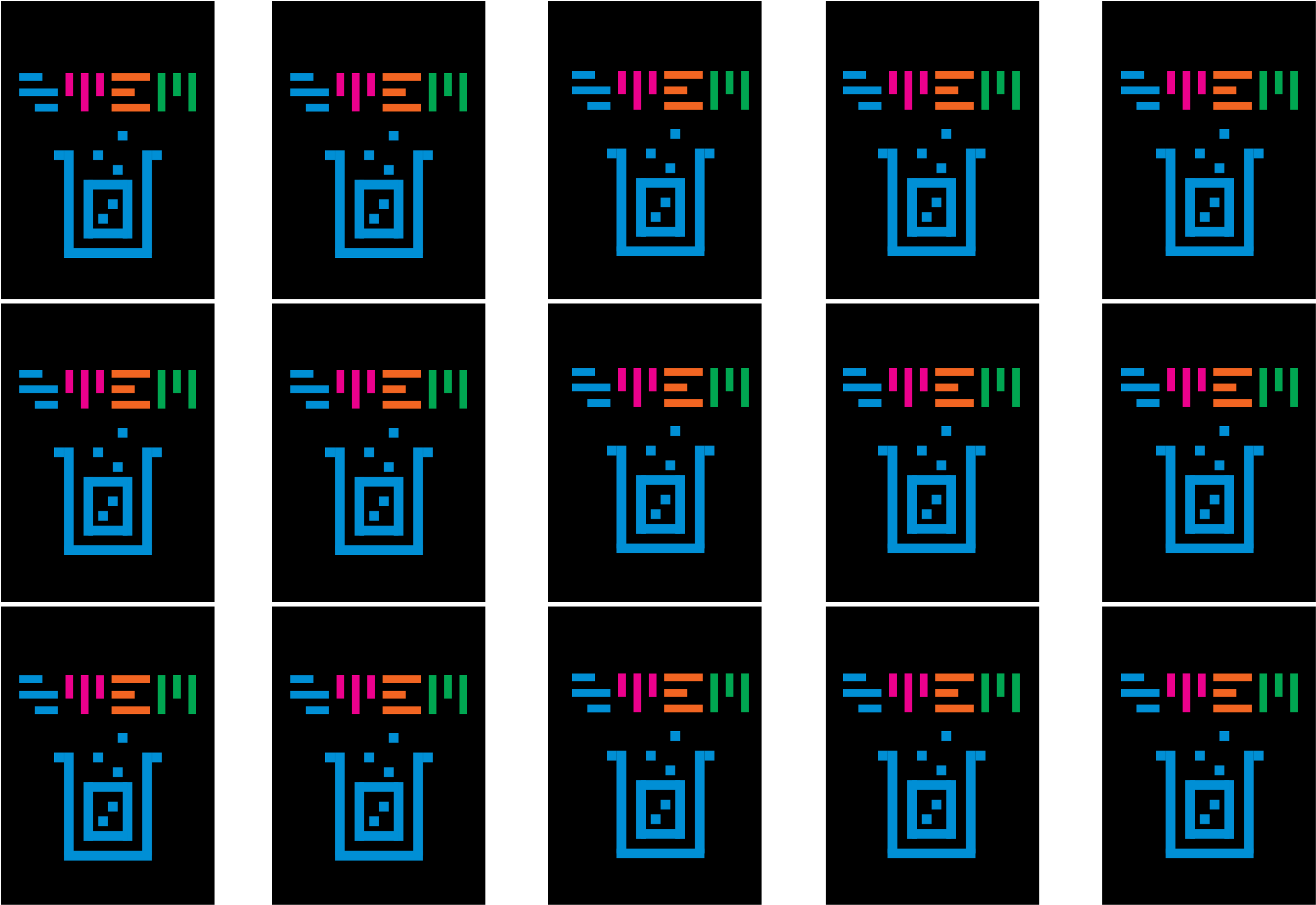


Timber

Construction



Straw



Everyday



Cocoa

Everyday



Rubber Tree

Everyday



Cork Tree

Everyday



Henna

Everyday



Tea

Clothing



Jute

Clothing



Bamboo

Clothing



Cotton

Clothing

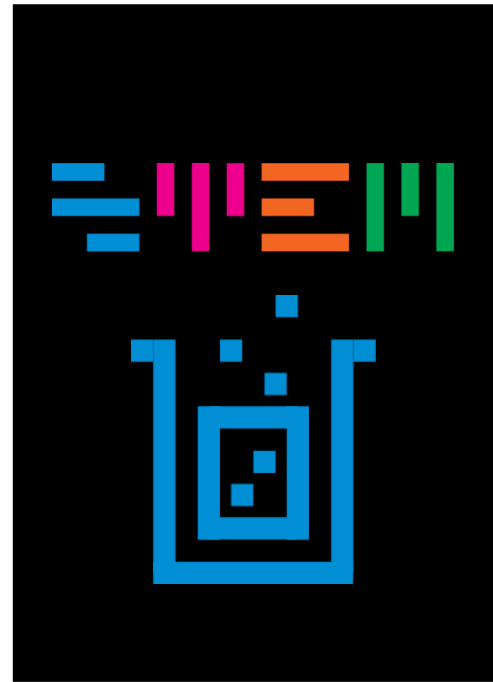
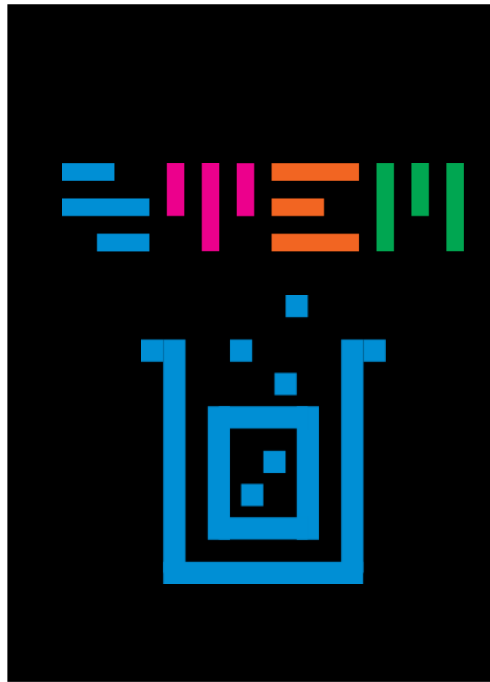
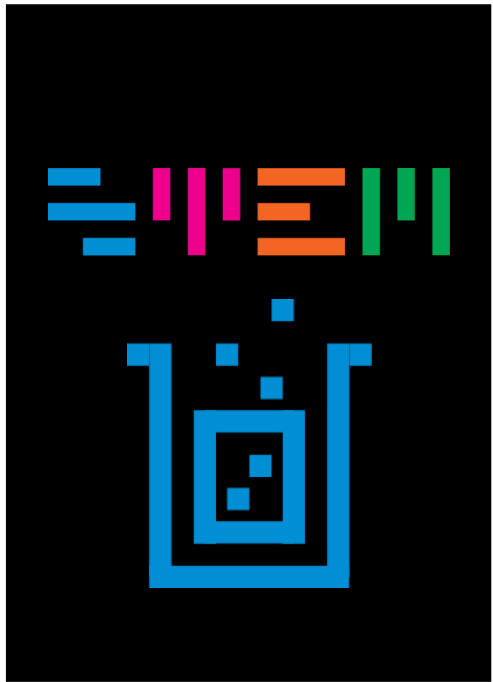
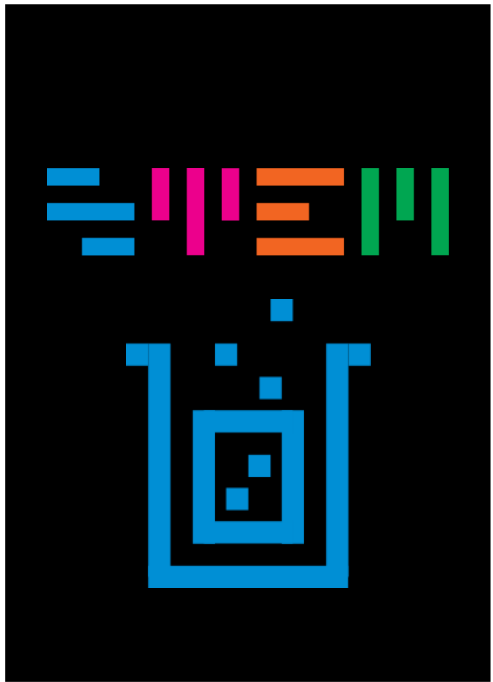


Flax

Clothing



Hemp



Plants used in **Medicine**



Ginger

1. Ginger is grown in the ground and is a type of root
2. It is commonly used in cooking and medicine
3. You can eat it raw or as a powder
4. Ginger can treat many forms of nausea
5. It can be used to reduce muscle pain
6. Eating ginger is also one of the best ways to lose weight

Plants used in **Medicine**



Foxglove

1. Foxglove is a flower normally grown in Europe and can reach up to 6 feet in height
2. It is commonly used in medicine
3. It cannot be eaten as a flower
4. Foxglove is used to treat an irregular heartbeat
5. It can be used to treat asthma
6. Eating foxglove can be poisonous



#STEMGlasgow



#STEMGlasgow



Plants used in **Medicine**



Lavender

1. Lavender is grown in fields of dry soil and blossoms in early spring.
2. It is commonly used in cooking and medicine
3. You can eat it raw or add it to bake goods or other recipes
4. Lavender can treat many forms of fungus
5. It can be used as an antiseptic
6. Lavender oil is commonly used in aromatherapy

Plants used in **Medicine**



Garlic

1. Garlic is grown in the ground and is a member of the onion family
2. It is commonly used in cooking and medicine
3. It can be chopped, crushed or chewed
4. Garlic can treat high blood pressure
5. It can help prevent people from getting the cold or flu
6. Garlic is low in calories and very rich in vitamins



#STEMGlasgow



#STEMGlasgow



Plants used in **Medicine**



Poppy

1. Poppies are flowers normally grown in warm climates across Asia
2. They are commonly used in medicine
3. Poppy seeds are a common snack found in supermarkets
4. Poppies are most commonly used in pain killers
5. They can cause you to have hallucinations
6. It is a symbol of remembrance

Plants used in **Fuel**



Vegetable Oil

1. Vegetable oil is extracted from seeds like sunflower and corn
2. It is used in cooking and for fuel
3. It can be harmful if you eat it raw
4. Vegetable oil can be used instead of diesel to power transport
5. It is an eco friendly fuel
6. It has essential fatty acids that are good for you



#STEMGlasgow



#STEMGlasgow



Plants used in **Fuel**



Sugar

1. Sugar is grown in canes in warm and tropical climates
2. It is commonly used in cooking and medicine
3. You can eat it raw but it is more commonly pressed to release the juice
4. Sugar can now be used to power cars
5. It can be used to reduce muscle pain
6. Glasgow's industry was build on sugar trade

Plants used in **Fuel**



Peat

1. Peat is found in wetlands around the world
2. It is used as a source of fuel to heat our homes
3. You cannot eat it
4. Peat can be used to help plants grow
5. Trees do not grow well in peat bogs
6. Peat can take thousands of years to form



#STEMGlasgow



#STEMGlasgow



Plants used in **Fuel**



Coal

1. Coal is found underground
2. It is commonly used as a source of fuel
3. It cannot be eaten
4. The ash from coal can be used to fertilise soil
5. It is not an eco friendly fuel
6. Coal can be black, brown or yellow

Plants used in **Fuel**



Corn

1. Corn grows above ground on a stalk
2. It is commonly used in coking and for fuel
3. It can be eaten raw or cooked
4. Corn can be used instead of diesel
5. It is an eco friendly fuel
6. Corn is a genetically modified vegetable



#STEMGlasgow



#STEMGlasgow



Plants used in **Everyday**



Henna

1. Henna is a tropical plant with colourful flowers
2. It is used as a dye for hair, cloth and skin
3. Henna can not be eaten
4. Henna can be used to treat damaged hair
5. A henna tattoo can last up to three weeks
6. Henna has been used to tattoo for 5000 years

Plants used in **Everyday**



Cocoa

1. Cocoa is grown on trees in hot climates
2. It is commonly used in food and cosmetics
3. You can eat it raw or it can be cooked into food
4. Cocoa is the main ingredient of chocolate
5. Cocoa can be used to treat diabetes
6. It takes 5 years for the cocoa tree to grow



#STEMGlasgow



#STEMGlasgow



Plants used in **Everyday**



Rubber Tree

1. Rubber trees grow in hot south American climates
2. It is commonly used in to make everyday objects
3. It cannot be eaten
4. The rubber is made from the sap of the trees
5. It is the most eco friendly way to make rubber
6. If stretched rubber will return to its original shape

Plants used in **Everyday**



Cork Tree

1. Cork is grown on trees in Africa
2. It is used in every day items
3. It cannot be eaten
4. Cork can be used to insulate houses
5. Cork expands if it gets wet
6. Cork trees have a life span of 350 years



#STEMGlasgow



#STEMGlasgow



Plants used in **Everyday**



Tea

1. Tea is grown on bushes in warm climates
2. It is commonly used in cooking and medicine
3. Tea can be eaten raw or brewed into drinks
4. Tea can be used boost your immune system
5. Tea is often used in moisturiser
6. Tea contains caffeine

Plants used in **Clothing**



Hemp

1. Hemp is grown on plants
2. It is commonly used in clothing and medicine
3. Hemp seeds are commonly used in cooking
4. Hemp clothing is lightweight
5. Clothing made from hemp is mould resistant
6. Hemp is a sustainable fibre for clothing



#STEMGlasgow



#STEMGlasgow



Plants used in **Clothing**



Flax

1. Flax is a plant grown in cool climates
2. It is used in clothing and health supplements
3. You can eat flax seeds
4. Flax fibres are used in linen
5. Needs 20 times less water to grow than cotton
6. It was used to wrap mummies in ancient Egypt

Plants used in **Clothing**



Cotton

1. Cotton is grown on bushes in warm climates
2. It is commonly used in clothing
3. It cannot be eaten
4. Cotton is grown in over 100 countries
5. It is one of the softest natural fibres
6. Can absorb up to 27 times its own weight in water



#STEMGlasgow



#STEMGlasgow



Plants used in **Construction**



Straw

1. Straw dried remains of oat barley and wheat
2. It is commonly used in construction
3. It can be eaten raw or cooked into other food
4. Straw can be used to make house roofs
5. It can also be used as an insulator
6. Straw is used to feed animals

Plants used in **Construction**



Banana Leaf

1. Banana leafs are grown on trees in warm climates
2. It is commonly used in construction
3. You can should not eat a banana leaf
4. Banana leafs are water resistant
5. They can be used to cook in
6. They can be up to 2 meters long weight



#STEMGlasgow



#STEMGlasgow



Plants used in **Clothing**



Bamboo

1. Bamboo is a grass that grows in warm climates
2. It is commonly used in construction and clothing
3. Bamboo cannot be eaten raw
4. Bamboo fibres can be used to create clothes
5. It is a very durable fabric
6. Bamboo is a sustainable fibre

Plants used in **Clothing**



Jute

1. Jute is a vegetable grown in India and China
2. It is commonly used in coking and clothing
3. Jute leaves are often used in cooking
4. Jute is the most common fibre after cotton
5. It is used to make rugs and curtains
6. Jute can be used as a fertiliser for soil



#STEMGlasgow



#STEMGlasgow



Plants used in **Construction**



Bamboo

1. Bamboo is a grass that grows in warm climates
2. It is commonly used in construction and clothing
3. Bamboo cannot be eaten raw
4. Bamboo is used to build bridges and scaffolding
5. It is a very strong material
6. It grows 10 times faster than trees

Plants used in **Construction**



Timber

1. Timber is from the trunk and branches of trees
2. It is commonly used in construction
3. You cannot eat it
4. Timber can rot if not treated
5. It is used to build the frames of buildings
6. Timber can also be used as a source of fuel



#STEMGlasgow



#STEMGlasgow



Plants used in Construction



Coconut

1. Coconut is grown on trees
2. It is commonly used in cooking and construction
3. You can drink the milk from a coconut
4. Coconut fibres can be used for roofs
5. The shells can be used to create bowls
6. Coconuts can be a fruit, nut and a seed



#STEMGlasgow



#STEMGlasgow

